

EEG-electrodes set ES-EEG-10/20 “Encephalan-ES”



Comfortable and quality record of EEG by a standard “10-20” scheme using all types of electroencephalographs “Encephalan” for routine and continuous studies, including autonomous EEG studies (Holter type monitoring), continuous EEG monitoring for diagnostics of epilepsy and polysomnographic studies



EEG electrodes of this electrode set are specially fixed and positioned at the specific attachment slots on the fixing elastic net cap. Electrode and a corresponding fixing slot are of the same colour.



Each electrode has a conductor of a specified length from the concentrator. Conductors are grouped by left and right hemispheres, by forehead and back of the head for comfortable distribution.

EEG-electrodes set ES-EEG-10/20 “Encephalan-ES”

■ **The set contains** different types of electrode systems, elastic net fixing caps, cover-caps and accessories. Required electrodes set is formed when ordered.

■ **Different types of electrode systems are used for PSG and EEG studies.** Such systems differ in number of EEG electrodes and slots for connection to electroencephalographs.

■ **Each type of electrode system has 3 sizes** – baby, children, adults - which differ in the length of EEG leads.

■ **The set contains 3 variants of fixing caps and cover caps** – for babies (34-45 cm), for children (45-55 cm) and adults (55-66 cm).

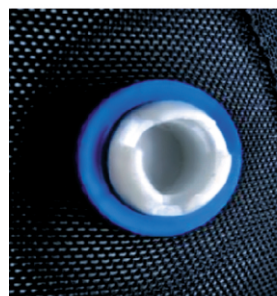
■ Fixing cover caps are made of elastic net material, which ensures **optimal attachment of electrodes to head and necessary thermal exchange.**

■ **Low level of high-stable EEG electrodes and fixing slots** for their attachment, elastic material of the slots, and comfortable elastic net cover caps ensure high quality of EEG record and patient's comfort at continuous studies.

■ **Stable electric contact of electrodes with the head skin and quick reaching of required level of electrode impedance** are ensured by the construction of electrode and its slot: electrode has a hole for gel injection (you may use an ordinary syringe with special plastic nozzle) and a slot contains specialized cavity for required quantity of gel for continuous studies.

■ Electrode set contains special thin and flexible cable with low level of triboelectric noise and high level of breaking strength. Decreasing the cable diameter allows **eliminating the number of artifacts during EEG record significantly and increasing patient's comfort during continuous studies.**

■ Electrode system and electrode cap may be separated, which makes their **cleaning, service and maintenance much easier.**

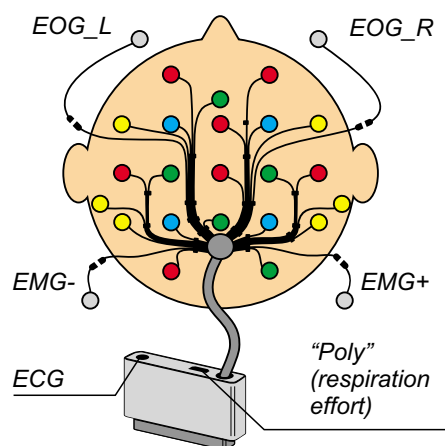


Several types of electrode system of “Encephalan-ES” electrode set.

ES-EEG-19-3

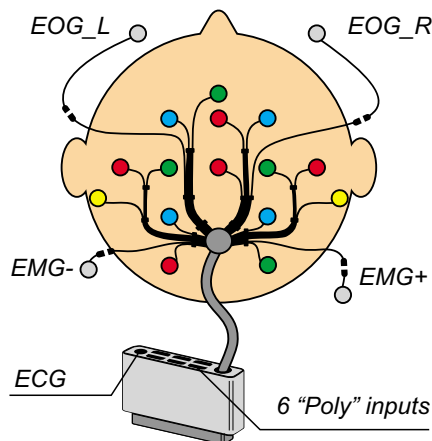
For patient transceiver-recorder ABP-26 of the main modification of electroencephalograph-recorder “Encephalan-EEGR-19/26” for EEG and PSG studies

- 19 scalp, 2 referential and 1 neutral EEG electrode
- connector for EOG and EMG electrodes,
- connector for ECG electrode and respiratory effort sensor.



ES-EEG-11-3

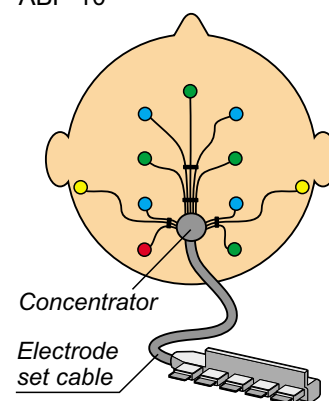
- 11 scalp, 2 referential and 1 neutral EEG electrode
- connector for EOG and EMG electrodes,
- connectors for 1 ECG electrode and 6 polygraphic sensors



ES-EEG-8-3

For autonomous patient transceiver-recorder ABP-10 of electroencephalograph-recorder “Encephalan-EEGR-19/26” Modification “Mini”

- 8 scalp, 2 referential and 1 neutral EEG electrode
- 1 polygraphic channel of ABP-10



Contact information

Medicom MTD Ltd.,
347900 Russia, Taganrog,
Petrovskaya str. 99
e-mail: office@medicom-mtd.com

Phones: +7 (8634) 62-62-42, -43, -44, -45
Fax: +7 (8634) 61-54-05
Web-sites: www.medicom-mtd.com
www.reacor.ru, www.egoscop.ru